



SKY RAINBOW  
[www.sky-rainbow.com](http://www.sky-rainbow.com)

# Unloading Guidelines

SKYRAINBOW INDUSTRY

## | Forklift operations for unloading, stacking, and storing packaging from inside containers.

Use a forklift to unload the packaging from inside the container through the container door, ensuring the composite panels are protected from damage during the process. The following rules must be strictly followed. Complaints arising from improper handling will not be accepted.

### Forklift Requirements (Figure 1)

- **Sufficient Lifting Capacity:** The forklift must be capable of handling the weight of the packages, which range from 1.5 tons to 5 tons. Ensure the forklift's capacity matches the requirements of the operation.
- **Fork Length:** Use forks that are long enough for stable handling. If needed, attach fork extensions to ensure proper support.
- **Fork Positioning:** Forks should extend fully to the opposite side of the pallet or at least penetrate two-thirds of the pallet for secure lifting and transportation.
- **Smooth Operation:** The forklift must be operated carefully to avoid sudden movements that could damage the packages or composite panels.

### Stacking (Figure 2)

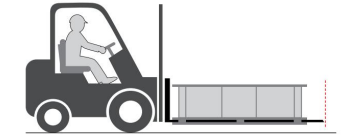
- **Short-Term Stacking:** It is recommended not to stack pallets higher than 5 units for short-term storage.
- **Long-Term Storage:** For long-term storage, each pallet should be stacked individually. Layered storage racks can be used for better organization and stability.

### Unloading Precautions (Figure 3)

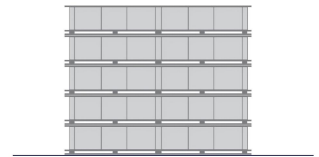
- **Lifting and Tilting:** First, lift the pallet and then tilt it. The center of gravity of the load should be as close to the lifting mast as possible and positioned in the middle of the forklift forks.
- **Avoid Using Fork Tips:** Do not lift the pallet using the tips of the forks, as this may damage the packaging or the product.

### Storage

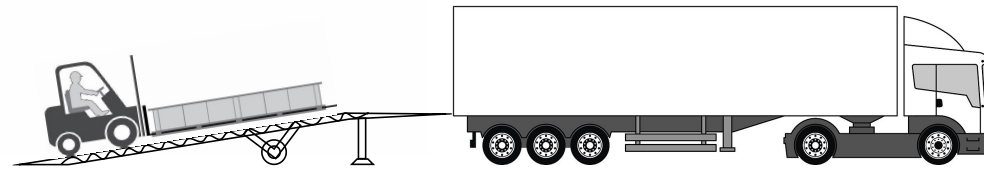
- **Indoor Storage:** Whenever possible, materials should be stored indoors to protect the packaging and goods from external environmental factors.
- **Outdoor Storage:** If outdoor storage is necessary, take precautions to prevent moisture, sunlight, and high temperatures. Prolonged exposure to high temperatures can increase the adhesion of the protective film, potentially causing issues. Ensure proper protective measures are in place.



(Figure1)



(Figure2)



(Figure3)

## | Manual Unloading of Aluminum Composite Panels from Inside the Container

### Static Charge

- Mechanically stacked panels may carry static electricity, causing the top and bottom panels to adhere together. Before handling, the adhered panels must be carefully separated.

### Transporting Panels from Inside the Container

- **Packing Configuration:** For loose-packed aluminum composite panels, the panels are stacked in pairs, face-to-face, to protect the surfaces.
- **Lifting Process:**
  - Personnel should position themselves on both sides of the panel along the long edges.
  - Each pair of panels should be lifted together from below, ensuring no pushing or pulling between the panels.
  - The back sides of the panels should face upward when lifted and moved toward the container door.
- **Placement:** Once the loose-packed panels are removed, they must be placed onto pallets for secure stacking.

### Required Personnel for Unloading

- Panel Length  $\leq$  4,500 mm: Requires 6 people.
- Panel Length  $\geq$  4,500 mm: Requires 8 people.

By adhering to these guidelines, the aluminum composite panels can be safely and efficiently unloaded without damaging the product.

